

GOCATUTV.COM Hydraulic Brake line Lock for UTV / Side by Sides



WARNING!

Hydraulic Brake line locks are intended to supplement park brake locks and should only be used **in conjunction** with your factory park brake setup. This lock should not be used instead of a factory park brake.

Proper operation of factory brakes is essential for the safety of the operator and of others. All brake service should be performed **ONLY** by persons experienced in the installation and proper operation of brake systems. After installation and before operating your vehicle, be sure to test the function of the brakes under controlled conditions. **DO NOT DRIVE WITH UNTESTED BRAKES!**

This hydraulic line lock device is **NOT** an emergency brake. This product is not for use with silicone or silicone based brake fluids. The brake park lock will work with any vehicle that has hydraulic brakes.

Follow all instructions listed in this document. Failure to perform any step can cause brake failure, and void all warranties. GOCATUTV is not responsible for improperly installed valves or equipment.

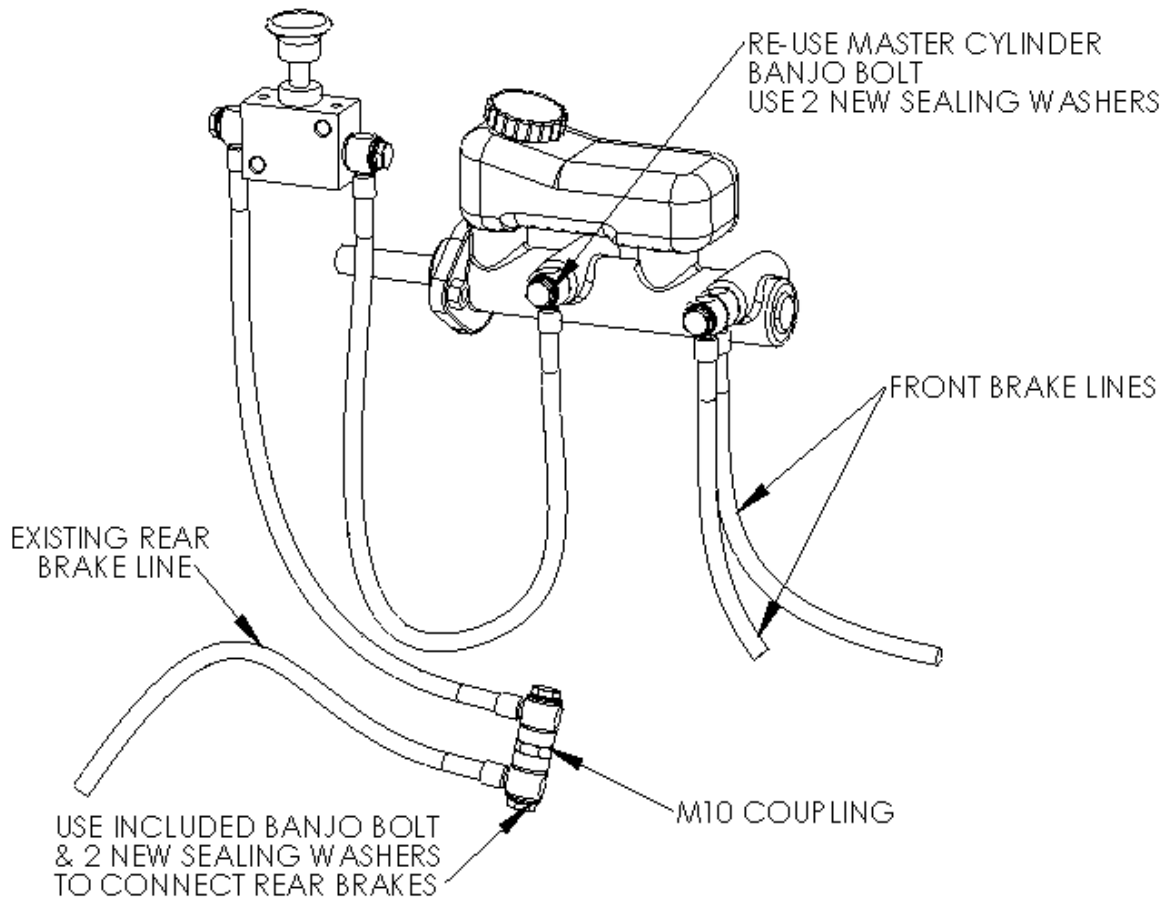
After the unit is installed, bleed your brake system of all air in the lines. **DO NOT PUSH** down on the knob while bleeding the brakes. Check for any leaks and make corrections before proceeding.

Operation

Hydraulic line locks maintain brake line pressure to the rear brake pads to prevent wheel movement. The valve is auto-holding and shall maintain brake pressure if activated correctly. GOCATUTV's line lock installs in-line with the rear brake line.

To use the Line lock: Press down the brake pedal, push the line lock knob down fully, then release the brake pedal.

Releasing the Line Lock: Push the brake pedal fully and it will release automatically.

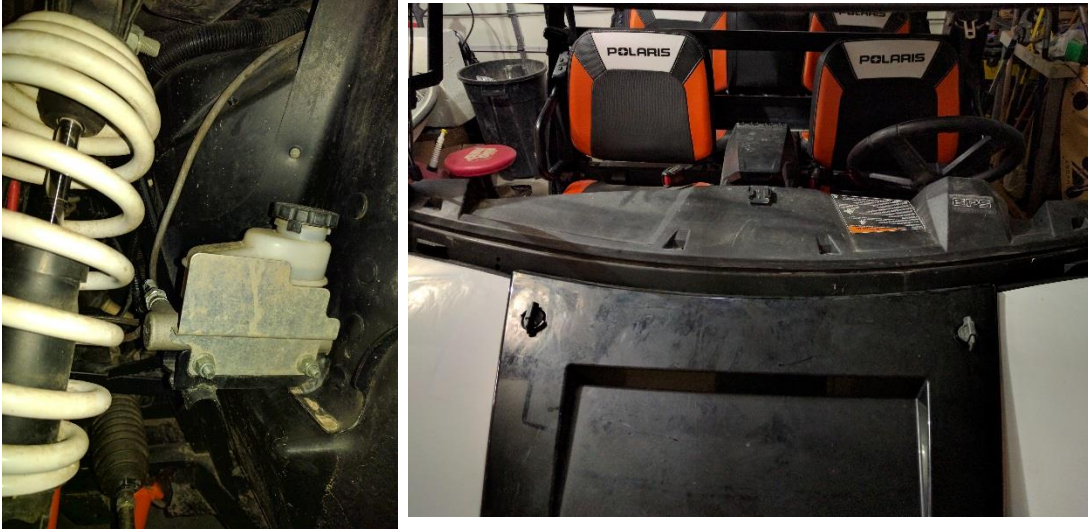


Tools needed:

- 12mm, 16mm, & 17mm wrench
- Masking & clear tape
- 11/16" & 9/32" drill bits
- Drill

Installation instructions

1. Inspect vehicle to determine best location to install valve. Valve installation should be close to shift lever or in an accessible location. Brake line valve must be located within 36" (100cm) of master cylinder. An ideal location for the Polaris Ranger is shown below:
2. Locate master cylinder and remove dash and any finish panels to allow access to valve installation location.



3. Cut out valve hole template and use packing tape to tape it to the installation location.



4. Drill both small holes first, then the large hole in the center.



5. Tape both line ends of the line lock assembly with masking tape. Tape must completely seal each end as this will aid in the brake bleeding process. This is an important step and should not be skipped. Any dirt or other contamination in brake system can destroy brake parts and/or cause brake failure.



6. Use a 17mm or 11/16" wrench to remove valve body from block. Also, remove both 6mm screws and washers. Be sure to keep valve block clean and prevent any dirt or contaminants from entering valve block.

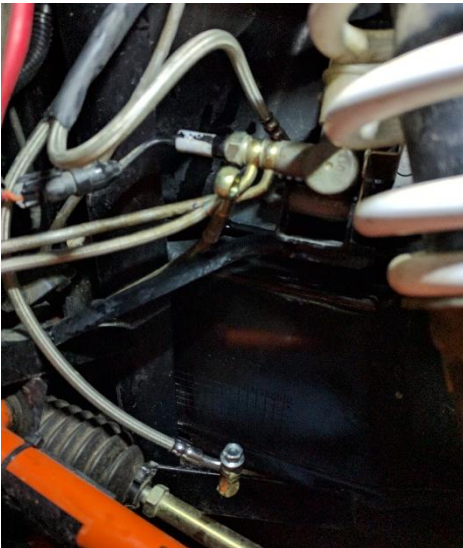


7. Route taped hose ends behind dash to brake master cylinder. DO NOT REMOVE TAPE YET. Re-install valve body into valve block. DO NOT OVERTIGHTEN. Tighten valve body to 15 lb-ft (20Nm).



8. Remove tape on input brake line (line with banjo fitting only), DO NOT REMOVE tape on the exit line (with coupling). Remove rear brake line, banjo bolt, and both sealing washers from rear port of the master cylinder. Discard old sealing washers (never re-use sealing washers) and put a new washer on both sides of the input line banjo fitting and push removed banjo bolt through washers. Install bolt back into master cylinder and tighten to 15 lb-ft (20Nm).

DO NOT OVER TIGHTEN BOLT as this will cause a leak and brakes to fail. Sealing washers are metal / rubber composite and do not require excessive force.

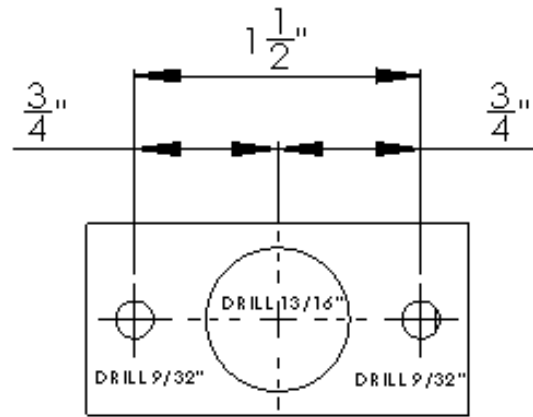


9. With tape still on exit line, **SLOWLY** pump brakes until brake fluid builds enough pressure to rupture taped end. Be sure enough brake fluid is in the reservoir and refilling may be required during process (use only factory approved brake fluid). This will pre-charge brake line and aid in the brake bleeding process.
10. Once brake line system is pre-charged with brake fluid, remove all tape pieces and connect rear brake line to exit line. Be sure to use two new washers on both sides of the banjo fitting. Screw the banjo bolt onto coupling and tighten to 15 lb-ft (20Nm).

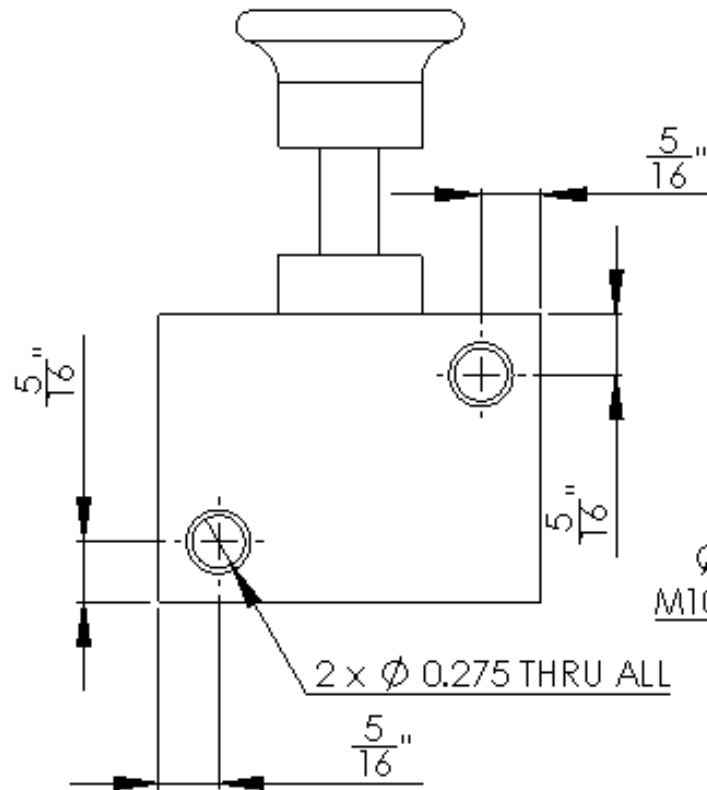
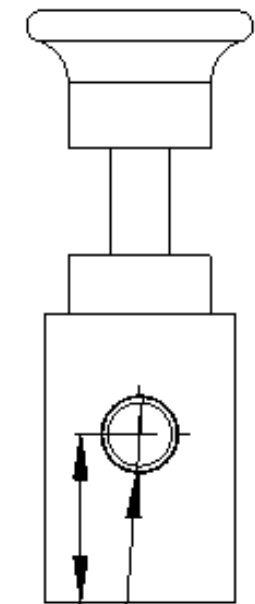
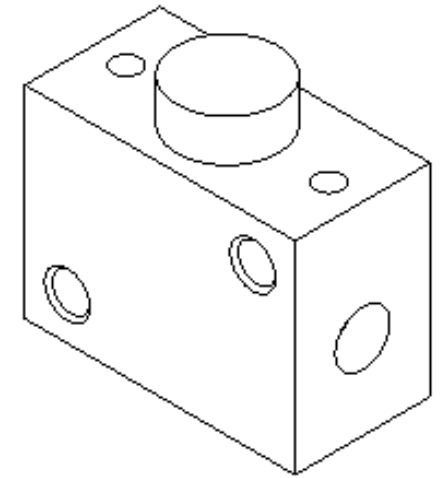
DO NOT OVER TIGHTEN BOLT as this will cause a leak and brakes to fail. Sealing washers are metal / rubber composite and do not require excessive force.

11. Test brake system by depressing brake pedal. If brakes are soft or spongy, consult your owner's manual to follow the factory steps to bleed rear brake lines until depressing the pedal is solid.
12. Test park line lock by depressing down the brake pedal, push the line lock knob down fully (while still holding brake pedal down), then release the brake pedal.
13. Release the Line Lock by pushing the brake pedal fully and it will release automatically.

14. Enjoy your new line lock.

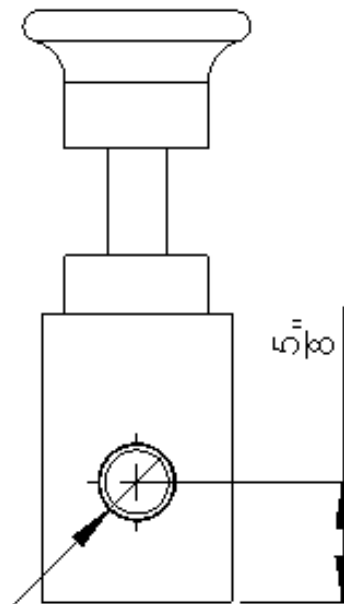


USE TEMPLATE TO DRILL HOLES
FOR FACE MOUNTING VALVE



ϕ 0.332 ∇ 0.458
M10-1.0 FINE THREAD

2 x ϕ 0.275 THRU ALL



$\frac{7}{8}$ "

ϕ 0.332 ∇ 0.458
M10-1.0 FINE THREAD

Project:
LINE LOCK

Print type Cont.:

GO CATUTV
7013 REDBUD DRIVE
MANHATTAN, KS 66503

TITLE:

Park Brake Valve

DRAWN BY:
RAH

DATE:
11/23/2016

SCALE:
1:1

DRAWING NUMBER :